

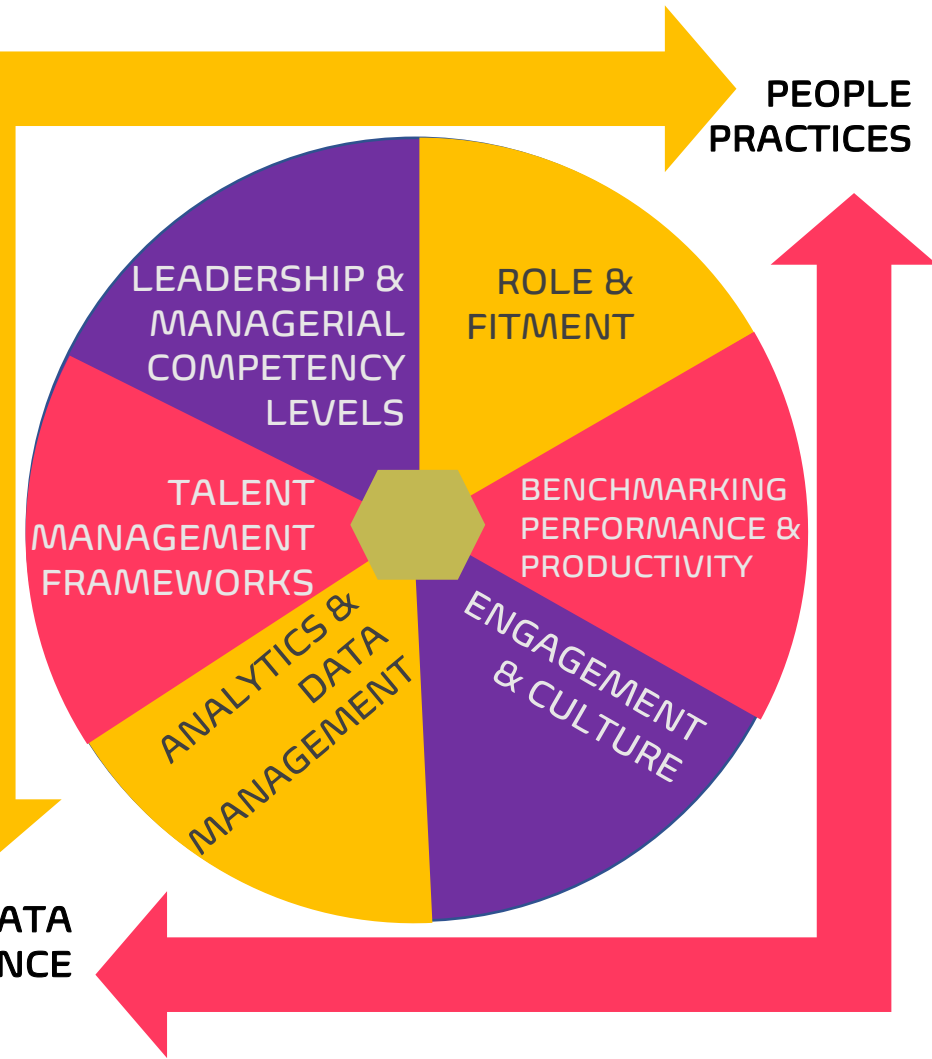


a brief
about

Pexitics
people excellence indicator analytics



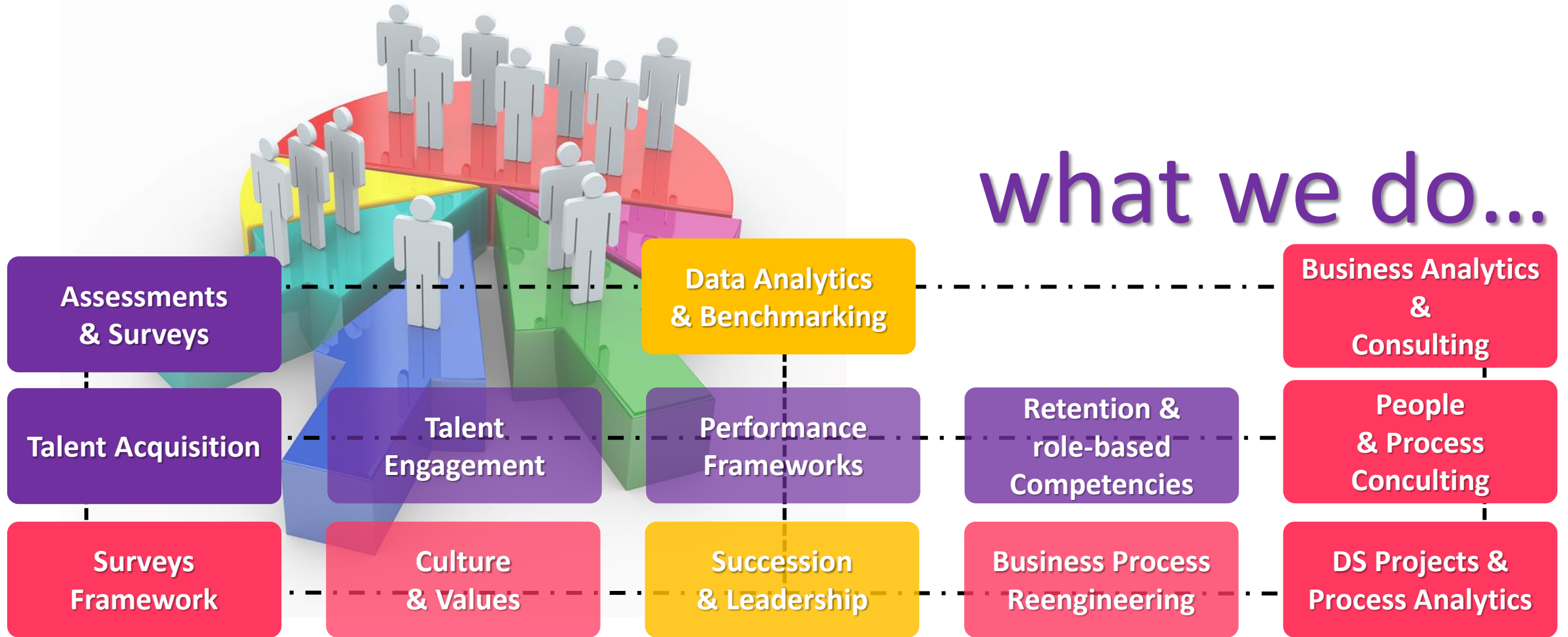
we believe in data
to influence productivity
using people & process
performance.
(one mighty word)



PEOPLE
PRACTICES

DATA
SCIENCE

what we do...



converges as data insights for business to benefit and improve.

tells us
why
people
are
failing

Assessments
& Surveys

tells us
how
many or
against
which
processes

Data Analytics
& Benchmarking



tells us
the way
out.

Business Analytics
&
Consulting

manufacturing

FMCG

chemicals

banking & finance

edutech, fintech

training & startups

**technology, telecom
ITES/BPO/KPO**

are some of the industries we cater to.



benchmarking talent or processes can be great opening conversations with us!

Opaque work processes and people practices can be the cause for varying levels of performance across individuals and functions within the organization, causing productivity concerns.

An intelligent approach towards measuring work processes or Talent objectives can determine the ideal, optimized and the high-growth requirements of competencies when organizations seek to shift gears to leverage their true potential. This is where our Analytics and Talent frameworks, as we make available through Pexitest.com, serve to aid your transformation using tools and real-time ML algorithms.

Pexitics stands for People Excellence Indicator Analytics and is transforming organisations in the space of Talent & Process maximisation using Analytics and latest People practices with advanced technology to cover the distance.



Whether battling a process or culture issue, we can deliver solutions.

Reach out to us to maximise your Business ROI through data-driven insights to transform your people & processes and create analytical benchmarks or develop customised frameworks and models to empower and lead the transformation within your industry.

We transform, you perform!





REPORTS INVENTORY

Motivation At Work
Intrinsic | Extrinsic
Includes 5 levels of Motivational Traits

Functional/Domain Knowledge
Sales/Finance/Marketing/Engineering as a domain with functional knowledge to assess domain knowledge and capabilities

Motivation At Work

Functional Skills

Leadership

CareerGraph

Screening Report

Situational Leadership

Authentic Leadership Traits + Situational Leadership + Aggression Quotient and host of Managerial and Leadership Competence traits

Competency

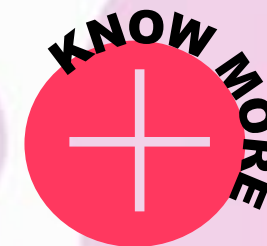
Role Responsibility Framework
9 attributes spread over 3 hierarchies that can be customised based on Competency

Cognitive Ability

Cognitive Reasoning
Inductive | Deductive | Abductive Verbal

Organisational benchmarks for hiring
Qualification | Experience | Location
a host of primary screening parameters

to view sample reports, visit Pexitest.com



assessments

FINANCIAL SERVICES

1

RISK Modelling
framework
based analytics

2

Fraud Detection
using current
data and trends

5

Real-Time
Predictive Analytics

4

Recommendation
engines to drive
Loans & Assets

3

Customer
Segmentation
analysis

- ❖ **Loan Default Prediction Model for Profit Maximisation:** Manage Default rates in the Loan portfolios by Predicting possible Loan Default.
- ❖ **Cross Sell/Upsell Model:** Identify next best product to offer to existing customers for increased ROI and reasonable Sales spends.
- ❖ **Customer Propensity Model:** The propensity model tries to predict the customer who has an intention or likelihood to buy a specific product class based on spends behavior.



MNCs/GOVERNMENT

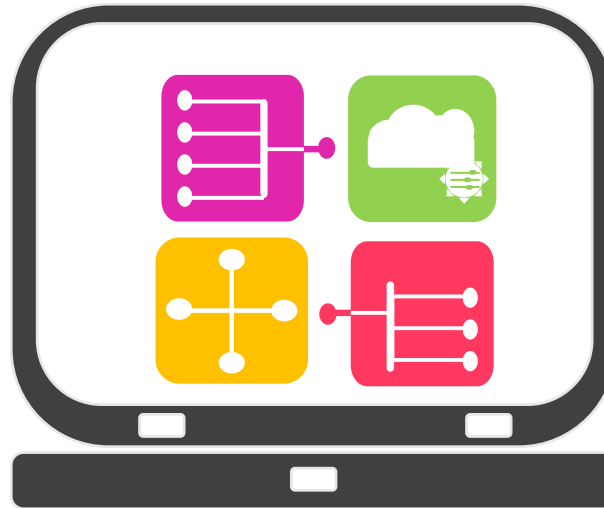
EDUCATION
HEALTHCARE
LARGE SCALE DATA MGMT



\\ANALYTICS RESOURCES

Resources @Pexitics

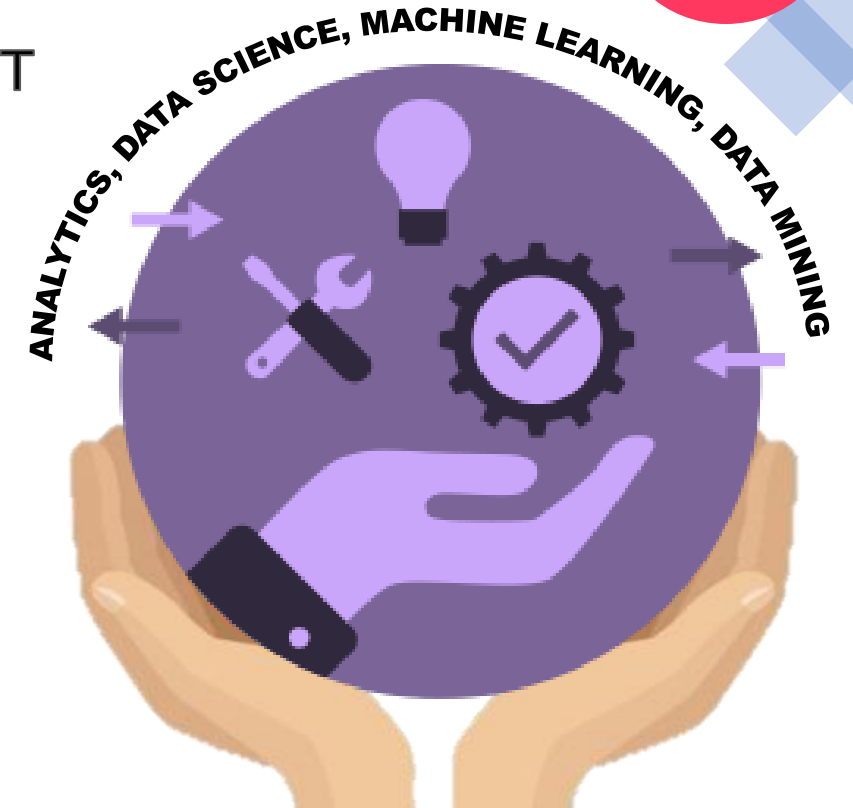
- Intern Data Analytics
- Full time Data Science
- Project Resources @DS



\\PROJECTS

Projects @Pexitics

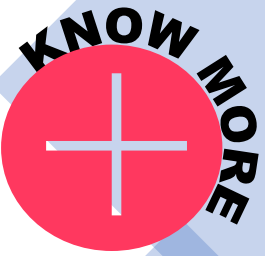
- Data Analytics Projects
- Project Modelling
- Project Mentoring



\\BUILD. OPERATE. TRANSFER

Data Science BOT @Pexitics

- Data Analytics Projects
- Project Modelling & Data Tooling
- Knowledge Transfer + Teams





Our Global Partner Network:

CROWE MAK
DUBAI/UAE

MUNOZ ASSOCIATES
IL/USA

COPYCAT GROUP
NAIROBI/AFRICA

View our contributions on LinkedIn and YouTube;



[Pexitics.com](https://pexitics.com) | People excellence indicator Analytics



score@pexitics.com | +91 7349 6623 20/21/22

